

LANCEMORE CONFERENCES & EVENTS



✓ STUNNING
LOCATIONS

✓ CURATED
EXPERIENCES

✓ FLAWLESS
SERVICES





Lancemore Mansion Hotel Werribee Park

WELCOME TO LANCEMORE HOTELS

Award winning service, in award winning regions

Moving forward into a new era, and now undergoing visible change, Lancemore is the leading boutique hotel brand in Australia — offering curated places and our signature welcoming touch.

Recognised by Qantas Business Traveler Awards, HM Awards, Condé Nast Traveler Reader’s Choice Awards and featured in the likes of Vogue Living, The Design Files and Gourmet Traveller, our world-class boutique hotels offer exceptional meetings and event experiences.

- LANCEMORE
MILAWA
- LANCEMORE
MANSION HOTEL
WERRIBEE PARK
- LANCEMORE
LINDENDERRY
RED HILL
- LANCEMORE
MACEDON RANGES
- CLEVELAND
ESTATE



LANCEMORE MILAWA

Discover breathtaking vineyard views and
tranquility in the King Valley



LANCEMORE

MILAWA

2 ¾ hours from Melbourne CBD

2 ½ hours from Melbourne Airport (Tullamarine)

- Dedicated onsite conference coordinator
- 4 flexible event spaces, catering for between 6-100+ delegates
- High quality AV and natural lighting
- Ergonomic seating
- 40 guest rooms
- Award winning Restaurant Merlot
- Customised F&B packages
- Free WiFi
- Secure, complimentary onsite parking
- Outdoor pool
- Extensive range of activities

Team Building Activities

- Adventure - abseiling, rock climbing
- Pedal to Produce
- Pinot & Petanque
- Wine & Cheese Tastings
- Italian Cooking Classes
- Golf
- Ballooning
- 4WD tours



Awards & Accolades

2019, 2016 TripAdvisor Certificate of Excellence

2023 AHEAD Award - Hotel Innovation (Winner)

Accommodation

Garden View — 32 m2

Sunset View — 32 m2

Buffalo View — 32 m2

Suites — 48 — 71m2



LANCEMORE

MILAWA



| Room | Merlot | Buffalo View | Fountain Room | Vines |
|--------------------|--------|--------------|---------------|-------|
| Area (sqm) | 155 | 106 | 57 | 45 |
| Height (m) | 2.8 | 2.7 | 2.8 | 2.9 |
| Theatre | 150 | 90 | 40 | 50 |
| Classroom | 80 | 50 | 25 | 25 |
| Board | 40 | 30 | 18 | — |
| U shape | 65 | 30 | 15 | — |
| Banquet | 120 | 70 | 30 | — |
| Cocktail/Reception | 200 | 100 | 50 | 80 |
| Cabaret/Cluster | 90 | 50 | 24 | — |
| Buffet | 150 | 80 | 40 | — |
| Dinner - Dance | 100 | 50 | 20 | — |



223 Milawa-Bobinawarra Rd Milawa VIC 3678
Phone — +61 3 8616 0534 Email — sales@lancemore.com.au
Website — lancemore.com.au/milawa



LANCEMORE

MANSION HOTEL
WERRIBEE PARK

Short 30-minute drive from Melbourne, this iconic
1870s estate is an entire world apart



LANCEMORE

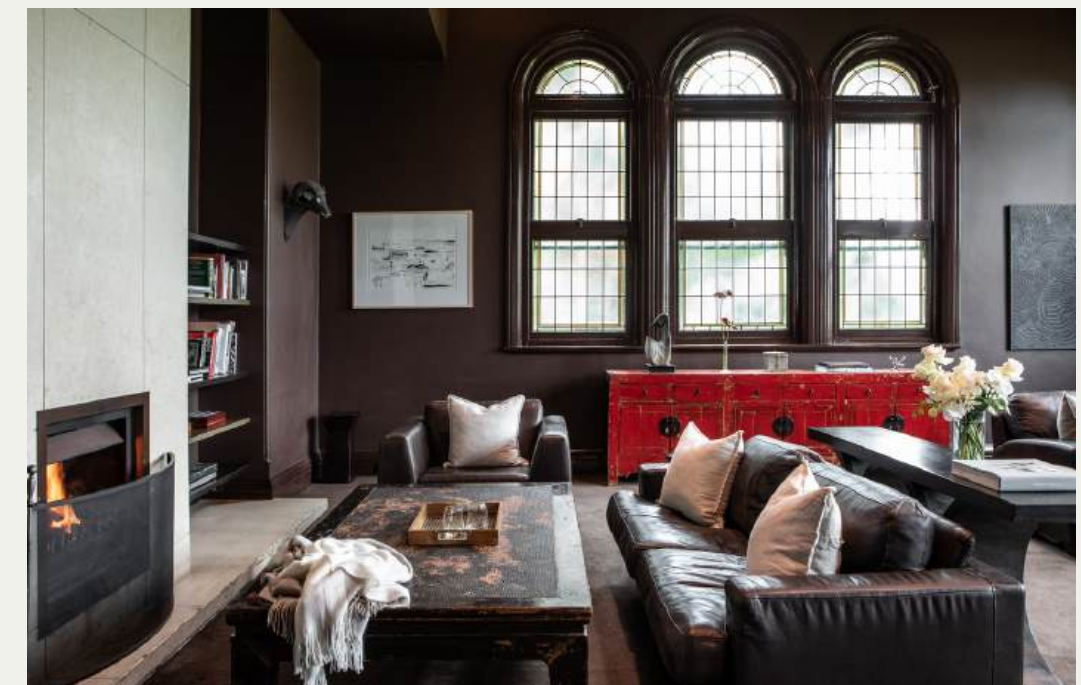
MANSION HOTEL WERRIBEE PARK



30 minutes from Melbourne CBD

30 minutes from Melbourne Airport (Tullamarine)

- Dedicated onsite conference coordinator
- 9 flexible event spaces, catering for between 6 — 250+ delegates
- High quality AV and natural lighting
- Ergonomic seating
- 91 guest rooms
- Award winning Joseph's Restaurant & Bar
- Customised F&B packages
- Free WiFi
- Secure, complimentary onsite parking
- Day Spa, gymnasium and indoor pool
- Extensive range of activities



Team Building Activities

- Werribee Open Range Zoo Tours
- Historic Mansion Tours
- Shadowfax Winery Tastings
- Tai Chi, Yoga & Pilates
- Polo, Golf, Archery
- Clay Target Shooting

Awards & Accolades

2019, 2018 Condé Nast Traveler Readers' Choice Awards
(#9 #8 in Australia Pacific respectively)
2019, 2018, 2017, 2016 Luxury Travel Magazine Gold List
Awards (finalist)
2021 HM Awards - Upscale Hotel

Accommodation

Heritage Rooms — 19 m2
Superior Rooms — 26 m2
Junior Suites — 33-40 m2



LANCEMORE
MANSION HOTEL
WERRIBEE PARK

| Room | Marquee | Theatre | Pavillion | Ballroom | Ball-room Split 1 | Ball-room Split 2 | Mannix | Bren-nan | Carr | Si-monds | Knox |
|------------------------|---------|---------|-----------|----------|-------------------|-------------------|--------|----------|------|----------|------|
| Area (sqm) | 300 | 180 | 167.4 | 146.2 | 86.2 | 60 | 56.7 | 56.2 | 35.3 | 35.3 | 20.2 |
| Height (m) | 5.4 | 6.1 | 3.8 | 4.4 | 4.4 | 4.4 | 4.4 | 4.4 | 3.8 | 3.8 | 3.9 |
| Theatre | 322 | 140 | 40 | 100 | 60 | 40 | 40 | 40 | 24 | — | — |
| Classroom | 242 | 96 | 45 | 80 | 54 | 27 | 27 | 27 | — | — | — |
| Board | — | 48 | 30 | 44 | 26 | 20 | 20 | 20 | 14 | 12 | 8 |
| U shape | — | 56 | 30 | 45 | 30 | 20 | 20 | 20 | — | — | — |
| Banquet | 250 | 140 | 110 | 100 | 60 | 30 | 40 | 40 | 20 | — | 10 |
| Cocktail/ Reception | 530 | 220 | 190 | 130 | 90 | 50 | 50 | 50 | — | — | — |
| Cabaret/ Cluster | — | 112 | 40 | 80 | 40 | 24 | 24 | 24 | 16 | — | — |
| Buffet | 250 | — | — | — | — | — | — | — | — | — | — |
| Dinner - Dance | 280 | — | — | — | — | — | — | — | — | — | — |

K Road, Werribee VIC 3030
Phone — +61 3 8616 0534 Email — sales@lancemore.com.au
Website — lancemore.com.au/mansion-hotel





LANCEMORE

LINDENDERRY
RED HILL

If ever there was a place for you to connect and recharge it's Lancemore Lindenderry Red Hill



LANCEMORE

LINDENDERRY RED HILL

70 minutes from Melbourne CBD

85 minutes from Melbourne Airport (Tullamarine)

- Dedicated onsite conference coordinator
- 4 flexible event spaces, catering for between 6—75+ delegates
- High quality AV and natural lighting
- Ergonomic seating
- 40 guest rooms
- Critically acclaimed restaurant, The Dining Room
- Customised F&B packages
- Free WiFi
- Secure, complimentary onsite parking
- Indoor pool
- Lindenderry Estate Wines — winery and cellar door
- Extensive range of activities

Team Building Activities

- Aquatic — fishing, sailing, stand up paddle boarding
- Horse trail — riding
- Archery
- Laser Challenge
- Yoga and Pilates
- Pinot and Petanque

Accommodation

Courtyard Room — 25m²

Terrace Room — 25m²

Linden Room — 35m²

Garden Room — 42m²

Balcony Suite — 42m²



Awards & Accolades

2026 The Dining Room awarded Two AGFG Hats

2025 The Dining Room awarded Two AGFG Hats

2024 AGFG Readers Choice Award

2024 The Dining Room awarded One AGFG Hat

2023 The Dining Room awarded One AGFG Hat

2022 HM Awards - Regional Property (Winner)

2021, 2020 Condé Nast Traveler Readers' Choice Awards
(#9, #8 in Australia Pacific respectively)

2019, 2018, 2017, 2016 Luxury Travel Magazine Gold List
Awards (finalist)



LANCEMORE
LINDENDERRY
RED HILL

| Room | Woodclyff | Burton | Vaocluse | Arcadia |
|--------------------|-----------|--------|----------|---------|
| Area (sqm) | 120 | 120 | 42 | 20 |
| Height (m) | 3.5 | 3 | 2.8 | 3.1 |
| Theatre | 72 | 50 | 24 | — |
| Classroom | 48 | 36 | 12 | — |
| Board | 42 | 36 | 12 | 8 |
| U shape | 32 | 26 | 15 | 8 |
| Banquet | — | 60 | — | — |
| Cocktail/Reception | — | 80 | — | — |
| Cabaret/Cluster | 56 | 40 | 15 | — |
| Buffet | — | 60 | — | — |
| Dinner - Dance | — | 50 | — | — |

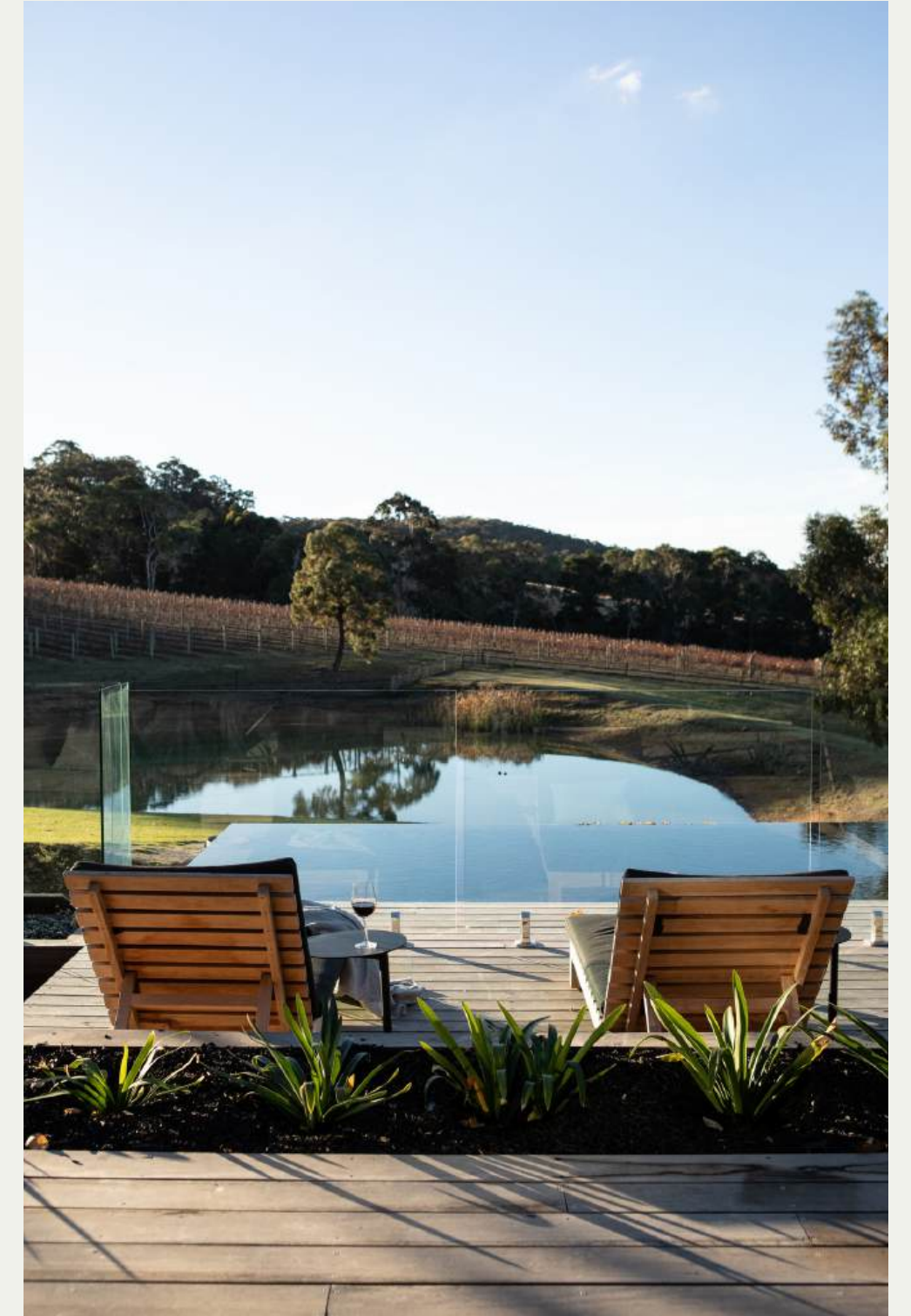
223 Milawa-Bobinawarrah Rd Milawa VIC 3678
Phone — +61 3 8616 0534 Email — sales@lancemore.com.au
Website — lancemore.com.au/milawa





LANCEMORE MACEDON RANGES

An unparalleled conference venue in the
breathtaking Macedon Ranges



LANCEMORE

MACEDON RANGES

65 minutes from Melbourne CBD
50 minutes from Melbourne Airport (Tullamarine)

- Dedicated onsite conference coordinator
- 5 flexible event spaces, catering for between 6–100+ delegates
- High quality AV and natural lighting
- Break-out rooms and ergonomic seating
- 274 acre Australian country setting
- 71 guest rooms
- Private dining
- Customised F&B packages
- Free WiFi
- Secure, complimentary onsite parking
- Outdoor pool
- Tennis courts

Team Building Activities

- Ropes course
- Archery
- Laser challenge
- Boot camp
- Private wine tastings
- Pinot & petanque
- Yoga & pilates
- Themed dinners
- Corporate challenge



Awards & Accolades

2021 HM Awards - Meetings & Conferencing Property
2019 Qantas Business Travel Awards - Best New
Corporate Retreat (finalist)

Accommodation

Standard Rooms — 21 m2
Hume Wing — 22 m2
Suites — 32 m2



LANCEMORE

MACEDON RANGES



| Room | Allenwood | Springfield | Hume | Dairy | Goldie |
|--------------------|-----------|-------------|------|-------|--------|
| Area (sqm) | 108 | 102 | 90 | 54 | 54 |
| Theatre | 110 | 110 | 50 | 30 | 30 |
| Classroom | 48 | 44 | 30 | 20 | 20 |
| Board | 44 | 40 | 30 | 18 | 20 |
| U shape | 36 | 34 | 25 | 17 | 15 |
| Banquet | 100 | 90 | — | — | — |
| Cocktail/Reception | 120 | 110 | — | — | — |
| Cabaret/Cluster | 70 | 60 | 30 | 25 | 20 |
| Buffet | — | — | — | — | — |
| Dinner - Dance | 90 | 80 | — | — | — |



1030 Kilmore-Lancefield Road Lancefield VIC 3435
Phone — +61 3 8616 0534 Email — sales@lancemore.com.au
Website — lancemore.com.au/macedon-ranges



CLEVELAND ESTATE

Tranquil vineyards, dramatic undulating landscape
and delicious local food & wine in picturesque
Macedon Ranges



CLEVELAND ESTATE

45 minutes from Melbourne CBD

30 minutes from Melbourne Airport (Tullamarine)

- Dedicated onsite conference coordinator
- Flexible layouts for seamless event flow
- A variety of indoor and outdoor collaborative spaces
- High quality AV and natural lighting
- High ceilings
- Private networking lounges per plenary space
- 100 acre Australian country setting. 42 acre of scenic vineyard view
- 50 guest rooms
- Spacious break out rooms/areas
- Free WiFi
- Secure, complimentary onsite parking
- Private dining and lounges
- Customised F&B packages
- Underground Cellar Door
- Walking + Running tracks, Aqua Golf

Team Building Activities

- Facilitated team building activities
- Wine tasting
- Laser clay target shooting & archery
- Segway adventures
- Amazing races
- Mindfulness & Yoga Sessions



Accommodation

Standard Rooms — 24m2 - 26m2

Standard Suite — 28m2 - 32m2

Harvest Superior — 26m2

Superior Suite — 28m2 - 32m2



CLEVELAND ESTATE



| Room | Dunsford | Daniel | Harvest | The Great Room | The Carriage House |
|--------------------|----------|--------|---------|----------------|--------------------|
| Area | 9x10 | 8x17 | 7.9x8.7 | 17x11 | — |
| Theatre | 50 | 100 | 50 | 150 | — |
| Classroom | 30 | 70 | 24 | 64 | — |
| Board | 20 | 30 | 20 | 40 | — |
| U shape | 30 | 40 | 20 | 45 | — |
| Cocktail/Reception | — | — | — | 160 | 120 |
| Cabaret/Cluster | 30 | 80 | 30 | 100 | — |
| Buffet | — | — | — | 100 | 80 |
| Dinner - Dance | — | — | — | 130 | 60 |



55 Shannons Road, Lancefield VIC 3435
Phone — +61 3 8616 0534 Email — sales@lancemore.com.au
Website — lancemore.com.au/cleveland-estate



LANCEMORE CROSSLEY ST.

Crossley Street is the pinnacle of Melburnian culture, centrally located between the Paris end of Bourke Street and Theatre District



LANCEMORE CROSSLEY ST.



30 minutes from Melbourne Airport (Tullamarine)

- 501 Executive Boardroom, catering for up to 10 delegates
- High quality AV and natural lighting
- High ceilings
- Access to our Rooftop Terrace
- Customised F&B packages
- 113 generous guest rooms
- 24 hour reception available
- Free WiFi
- Bespoke commissions from emerging artists
- Secure parking located in Bourke St
- Surrounded by iconic Restaurants
- Competitive corporate rates



Our Neighbours

- Princess Theatre
- Her Majesty Theatre
- Longgrain
- Bodega underground
- China Town
- Becco
- Pellegrinis
- Treasury Parks and gardens
- Shopping
- Laneways

Accommodation

Standard Rooms — 24m2 - 26m2
Premium Rooms— 28m2 - 32m2
Junior Suite — 43m2
Two Bedroom Suites - 62m2 - 67m2





OUR PROPERTIES ARE BASED ALL AROUND AUSTRALIA

ALAMANDA
PALM COVE
BY LANCEMORE

THE
Constance

LANCEMORE
MILAWA

LANCEMORE
LINDENDERRY
RED HILL

LANCEMORE
CROSSLEY ST.

LANCEMORE
MANSION HOTEL
WERRIBEE PARK

LANCEMORE
MACEDON RANGES

CLEVELAND ESTATE

LANCEMORE MILAWA

223 Milawa-Bobinawarra Rd, Milawa VIC 3678

+61 3 5720 5777

milawa@lancemore.com.au

LANCEMORE MANSION HOTEL WERRIBEE PARK

Escarpment Rd, Werribee South VIC 3030

+61 3 9731 4000

mansion@lancemore.com.au

LANCEMORE LINDENDERRY RED HILL

142 Arthurs Seat Rd, Red Hill VIC 3937

+61 3 5989 2933

redhill@lancemore.com.au

LANCEMORE MACEDON RANGES

1030 Kilmore-Lancefield Rd, Lancefield VIC 3435

+61 3 5782 1844

macedonranges@lancemore.com.au

CLEVELAND ESTATE

55 Shannons Rd Lancefield VIC 3435

+61 3 5429 9000

hello@clevelandestate.com.au

LANCEMORE CROSSLEY ST

51 Little Bourke St, Melbourne VIC 3000

+61 3 9639 1639

crossleyst@lancemore.com.au

